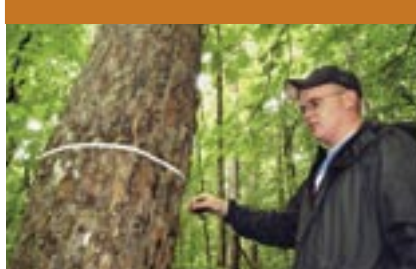


forest management technology

GROW



Forestry is one of North Carolina's oldest and most basic industries. Forestry in the United States got its start right here in Western North Carolina. The "Cradle of Forestry" is the site of the first forestry school in America, the Biltmore Forest School, founded in 1898 by Dr. Carl Schenck, chief forester for George Vanderbilt's Biltmore Estate.

The AAS degree program in Forest Management Technology is the only associate degree program in North Carolina recognized by the Society of American Foresters. Students acquire technical knowledge, understanding, and abilities essential in managing, conserving, and utilizing forest resources.

While forestry has traditionally included logging, lumber, solid wood products, pulp and paper, and wood furniture, many foresters today also work with water quality, prescribed fire, invasive species control, and other non-industrial areas. Forest recreation activities such as hunting, fishing, hiking, bird-watching, and camping are a large part of our state's tourism industry. Wildlife management, forest recreation, and water resource management are areas where qualified forestry practitioners are needed.

Outdoor classes and labs are a major part of the forestry program at Haywood Community College.

"Nothing is more beautiful than the loveliness of the woods before sunrise."

George Washington Carver



For more information, contact 828.627.4560 or visit the Natural Resources website at <http://naturalresources.haywood.edu> on the Internet.

Forest Management Tehnology CURRENT CURRICULUM

FIRST YEAR

Fall

BIO 111	General Biology I
CIS 110	Introduction to Computers
ENG 111	Expository Writing
FOR 121	Dendrology
FOR 171	Introduction to Forest Resources

Spring

BIO 120	Introductory Botany
ENG 113	Literature-Based Research
Or	
ENG 114	Professional Research and Reporting
FOR 131	Forest Measurements
FWL 142	Wildlife Management
MAT 140	Survey of Mathematics

Summer

FOR 173	Soils and Hydrology
FOR 215	Introduction to GIS/GPS
FOR 232	Forest Mensuration

SECOND YEAR

Fall

FOR 225	Silvics and Silviculture
FOR 240	Forest Protection
MAT 120	Geometry and Trigonometry
Humanities and Fine Arts\Technical Electives	

Spring

FOR 212	Forest Surveying and Aerial Interpretation
FOR 271	Forest Management
FOR 282	Forest Recreation
FOR 285	Logging and Marketing
Social and Behavioral Sciences	

TECHNICAL ELECTIVES

AGR 121	Biological Pest Management
FOR 275	Natural Resources Issues
FWL 126	Wildlife Ornithology
FWL 212	Wildlife Policy and Law
FWL 222	Wildlife Mammalogy
FWL 232	Terrestrial Ecology
FWL 242	Fishery Management
FWL 256	Animal Immobilization
HOR 124	Nursery Operations
HOR 164	Horticulture Pest Management